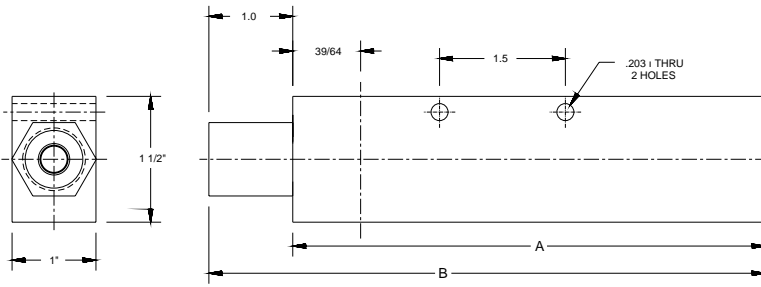


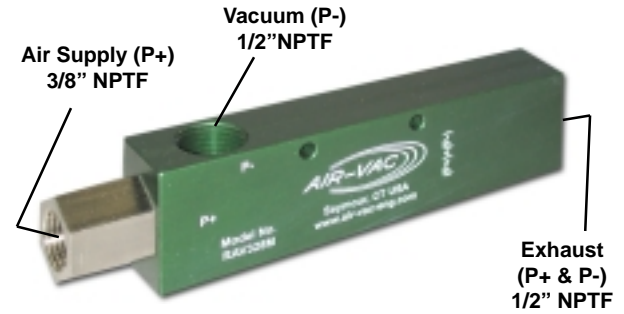


RAV SERIES DATA SHEET

SINGLE STAGE



PUMP	A	B
RAV196M	4	5
RAV250M	4	5
RAV328M	5 5/8	6 5/8
RAV375M	5 5/8	6 5/8

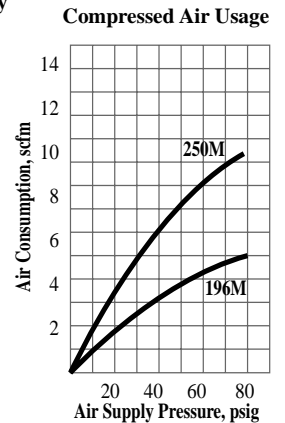
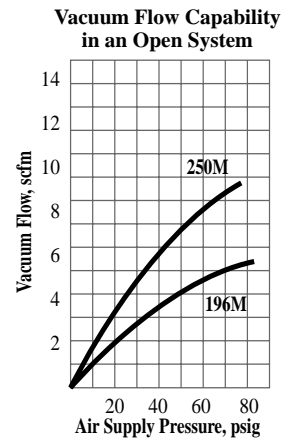
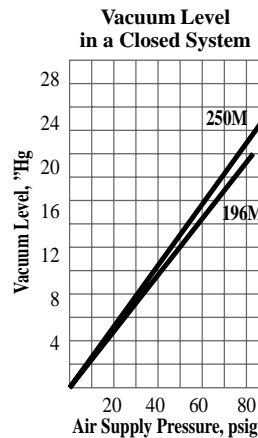


Simple Single Stage design generates vacuum quickly. Two piece construction has no moving parts and no gaskets or seals to wear.

Large "M" Version

Produces vacuum levels up to 21.4"Hg and vacuum flow rates up to 8.5 scfm.

Model Number	RAV196M	RAV250M
Vacuum Level, "Hg	19.6	21.4
Vacuum Flow, scfm	5.3	8.5
Air Consumption, scfm	4.9	9.1
Weight, oz.	11	11
Sound Level, dBA	70	74



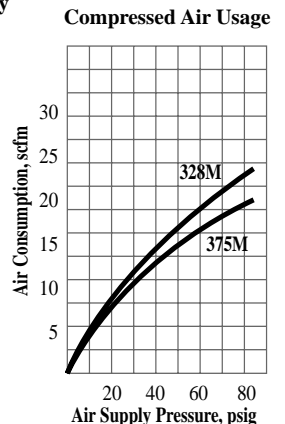
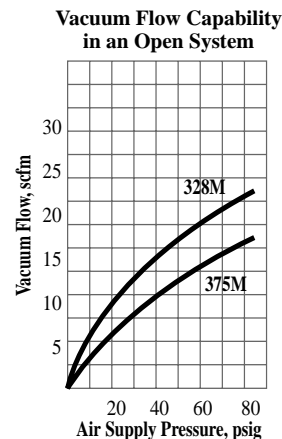
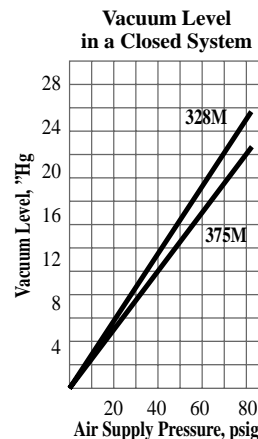
Time in Seconds to Evacuate a Volume of 1 Cubic Foot							
"Hg	3	6	9	12	15	18	
RAV196M	.60	2.0	4.1	4.9	7.2	17.0	
RAV250M	.50	1.0	1.5	4.0	5.0	11.2	

Vacuum Flow Rate, scfm vs. Vacuum Level, "Hg							
"Hg	0	3	6	9	12	15	18
RAV196M	5.3	5.2	4.8	4.2	3.4	2.2	0.7
RAV250M	8.5	7.6	6.3	5.0	4.7	3.2	1.4

Small "M" Version

Produces vacuum levels up to 23.8"Hg and vacuum flow rates up to 19.9 scfm.

Model Number	RAV328M	RAV375M
Vacuum Level, "Hg	23.8	21.3
Vacuum Flow, scfm	15.1	19.9
Air Consumption, scfm	18	20.2
Weight, oz.	14	14
Sound Level, dBA	73	78



Time in Seconds to Evacuate a Volume of 1 Cubic Foot							
"Hg	3	6	9	12	15	18	
RAV328M	0.3	.90	1.5	1.9	3.1	4.4	
RAV375M	0.3	.60	1.0	1.6	2.8	4.3	

Vacuum Flow Rate, scfm vs. Vacuum Level, "Hg							
"Hg	0	3	6	9	12	15	18
RAV328M	15.1	14.1	13.2	11.9	10.5	9.1	7.1
RAV375M	19.9	18.6	16.8	14.6	11.3	7.7	

- Sound levels recorded with mufflers.
- Operating temperature: 0° to 400°F

- Materials of construction: anodized aluminum body, nickel plated brass nozzle.

Vacuum Pumps to produce specific results or to operate at specific input pressures are available. Contact Air-Vac or your local authorized Air-Vac distributor.